



建橋者基督教華人社區服務中心 2008-09 年報

AMERICAN CHINESE CHRISTIAN EDUCATIONAL AND SOCIAL SERVICES, INC. 2008-09 ANNUAL REPORT

244 HARRISON AVE • BOSTON • MA 02111

[HTTP://WWW.CHINATOWNACCESS.ORG/](http://www.chinatownaccess.org/)

REMARKS FROM THE PRESIDENT OF BOARD OF DIRECTORS

董事會主席的話

Cliff Chuang

莊宏毅

Dear ACCESS Community:

致：建橋者事工的支持社群

Greetings on behalf of the ACCESS Board of Directors. This November, ACCESS will celebrate its 17th year of ministry in Chinatown. We praise God for his faithfulness over the past year, in spite of the economic downturn that has affected so many in our community.

謹代表建橋者董事會全人向各位問安。讚美神！過去一年雖然經濟衰退嚴重地影響了我們社區不少的人，但神仍然是信實的。

We especially praise God for bringing new life to our adult English Speakers of Other Languages (ESOL) program. This past spring, ACCESS was able to relaunch ESOL classes with a new scholarship program, and our classrooms are once again full of adults working hard to learn English. We are grateful to the individual donors as well as the Chinatown Trust Fund and English for New Bostonians who invested so generously in our new scholarships, and we trust God for continued provision for this program.

我們特別要讚美神，使成人英文班復甦；今春藉著新的助學金計劃，收生情況很滿意，課室再次坐滿了勤奮學習英語的成人。我們由衷感謝慷慨捐獻助學金的弟兄姊妹，以及「華埠信託基金」和「新波士頓市民英語學習計劃」的撥款，深信神會繼續供應這項事工的需要。

We are continually thankful for the consistent and loving work that our dedicated staff and volunteers do each day with our students and families in each of our ministries, including our after school and summer programs for children and new computer literacy classes for adults. And we are thankful for the support of churches, organizations, and individuals whose gifts of funds and many volunteer hours have allowed ACCESS to continue being the eyes, ears, hands, and feet of Jesus in Chinatown.

課餘活動班，暑期活動班，成人電腦基礎班，成人英文班和其他事工的每一位員工或義工，一直以愛心服事社區，為此我們不住的感恩。我們也感謝各教會，社團和個人在金錢和人力上的支持，讓建橋者能繼續在華埠成為主耶穌的眼睛、耳朵和手腳。

We look forward to the work of the coming year, which includes taking a closer look at our children's programming, examining our overall personnel structure, and expansion of our computer literacy programs along with a potential upgrade of our computer lab facilities. We will also be revisiting our strategic direction for the next several years. Please contact me (cchuang@post.harvard.edu) or Executive Director Mei Kee Wong (ed@chinatownaccess.org) if you would like to partner with us as we seek to love our brothers and sisters as God has loved us.

未來一年要做的工作很多，例如審查兒童活動班的課程，檢討人事部的結構，擴展電腦基礎班，改善電腦教室內的裝置等。此外我們也要好好地思考未來數年策略性的方向。假如你有意作我們的夥伴，請與我(cchuang@post.harvard.edu) 或執行主任黃廖美琪 (ed@chinatownaccess.org) 聯絡。

Many Blessings,

主內

Cliff W. Chuang

莊宏毅

President, 2009 Board of Directors

2009年年度董事會主席

“On the mountain of the Lord it will be provided.”
(Genesis 22:14)

In the midst of one of the worst recessions in decades worldwide, God has rallied His people to respond to the challenges of our time, and become a blessing to the communities around us.

God has used a team of mostly part-time staff (1 full-time and 13 part-time staff, total 6.53 FTE) and 79 volunteers (13 Board and Committee members and 66 volunteers, 17 of whom come weekly) to accomplish His outreach of love to our community. Here is what the Lord has enabled us to do during the last school year (September 2008 to August 2009).

Adult English for Speakers of Other Languages (ESOL)

Despite extremely dire financial circumstances for the agency as a whole this past Spring, our Board decided to put resources into thoroughly investigating the needs of this program and to develop alternative financial models. Our newly hired Coordinator, with the support of volunteers, conducted a Community Survey in the winter, confirming a continued strong need for “survival English,” the very program that we had been providing for our community for the last two decades. Our Finance Committee analyzed the cost of the program, exploring possibilities for supporting this program while being able to offer it at a cost that every student could afford. We held a special 3-week course on restaurant vocabularies in late January and early February, and only held one class during the spring semester.

The “adopt a student/adopt a teacher” scholarship campaign was launched in early April, and many responded despite the bleak economic circumstances. We re-launched our ESOL program in late May with 5 classes, having raised full financial support to support the salary of 1 teacher and costs for 10 students. The Lord blessed us with two grants that would allow us to give out 40 full-tuition scholarships for the fall semester in 2009 and spring semester in 2010. We are currently holding 5 morning classes and 1 evening class.

We are particularly glad for the opportunity to share Christ’s love with our current students. Please wait on the Lord with us as we explore additional funding sources to support this scholarship program in 2010, especially after our current grant funding expires.

「在耶和華的山上必有預備。」(創世記 22:14)

處於全球幾十年來最大一次的經濟衰退中，上帝興起祂的子民去回應我們這世代的挑戰，成為周圍社區的祝福。

上帝使用一群大多是部份時間的同工(一位全職、十三位部份時間的同工，加起來相等於 6.53 位全職者)和七十九位義工(包括十三位董事及小組成員，六十六位義工:其中十七位每週都來協助我們)去達成祂對我們社區的關愛。以下是主在上學年(零八年九月至零九年八月)加力給我們所作成的。

成人英文班

雖然我們的財政狀況到了有可能影響我們機構生存的地步，董事會還是決定用有限的資源去徹查社區對這服務的需要，及可行的經濟模式。新上任的英文班主任及義工在去年冬季做了一個社區調查，肯定社區對基本英文班—就是過去十多年來我們所提供的服務，仍然有極大的需要。經濟組分析了服務所需經費，探討是否有辦法又能支持這服務，又能為同學們提供他們在經濟上可以負擔得起的課程。在一月底至二月初，我們試辦了一個為期三週的餐館詞彙課程，而春季時祇提供了一班英文班。

四月初，我們推出了「認領學生、認領教師」計劃，在經濟低迷的困境中，仍有不少人回應。新的英文班服務在五月底的夏季班推出，獻金支持了一位老師及十位同學。主又祝福我們，獲得兩個撥款支持四十位同學在零九年秋季及一零年春季的學費。目前開了六班:五班在上午、一班在晚上。

我們特別高興有機會與學生分享基督的愛。請與我們一同等候主的引導，特別在一零年中撥款支持結束之後所需的經費來源。

Enrichment Program (EP)

Enrollment in our After School Enrichment Program (ASEP), especially voucher subsidy, dropped as parents lost their jobs. We have been getting mostly 3rd grade and older children, who have more difficult homework. The program continued to benefit from volunteers who came weekly to assist during homework and activity times.

Enrollment in our 2009 Summer Enrichment Program (SEP) remained high, with a higher number of full-paying students than we ever had. Chinese Bible Church of Greater Boston (CBCGB) continued to provide Summerbridge, a one-week extension of the summer program held at the CBCGB church in Lexington. We were overjoyed to celebrate an early summer wedding of two of the main volunteer leaders in this program.

Computer Literacy Program (CLP)

Six dedicated volunteers from Boston Chinese Evangelical Church (BCEC) provided seven 4-week basic computer training courses to 55 non-English speaking adults. In June, we piloted a four-week computer programming course "Scratch" with our EP children. The 10 slots available were filled in one day.

Please pray for program development of this service, to bridge the great divide between the technically literate and illiterate. We are seeking ways to upgrade our computer lab, with equipment that is over 7 years old.

Volunteer Income Tax Assistance (VITA)

We continued to provide free income tax filing assistance to our community in March, which allowed another opportunity to show God's care to our community.

College Scholarship

We used this \$1,000 scholarship to partially support a College Intern who is also one of our EP alumni.

Family Life Education

Though our main Family Life Education volunteer was out of country for half a year, we were able to hold parenting discussions 4-5 times during the 2008-2009 school year with parents of our EP children. This director also provided parenting workshops for the Chinese Church Head Start program.

New program: Recreational Program for Chinese-speaking Consumers of Statewide Head Injury Program (SHIP)

We responded to the invitation from Massachusetts Rehabilitation Commission's (MRC's) to provide monthly

兒童活動班

零八至零九學年的課餘活動班學童人數下降，尤其是來自持托兒券或父母失業的家庭。所收的學生多是三年級或以上的，因他們的家課較困難。每週都在學童做功課及活動的時間中來協助老師們的義工，給我們很大的幫助。

零九年的暑期活動班學童人數是持續偏高，今年是交全費學童最多的一年。波士頓郊區聖經教會繼續在勒星頓市的教堂，為我們的學童提供額外一週的暑期日營。其中兩名領袖在暑期初結婚，仍投入事奉，令人振奮。

電腦基礎課程

波士頓華人佈道會的六位義工繼續為五十五位不諳英語的成人提供七次每次四星期的成人電腦基礎班。在六月初，我們為課餘班的學童試辦了一個為期四週名叫「貓爪」的電腦程式設計課程。十個學位在一天內滿額。

請為這事工代禱，在懂得和不懂得科技的鴻溝上建立橋樑。我們正在尋找方法去更換電腦室內超過七年的電腦及器材。

免費報稅服務

我們繼續藉著這項每年三月舉辦的免費報稅服務，向社區表達上帝對他們的愛眷。

大學獎學金

我們用了一千美元的大學獎學金去資助一名建橋者舊生在建橋者實習。

家庭生活教育

雖然負責這事工的主要義工出國半年，我們仍繼續為課餘班的家長舉行了四至五次的座談會。並繼續為華人啓蒙學校提供家長講座。

新服務：全省華語頭部受傷者康樂活動

我們回應了麻省康復部的邀請，為華語頭部受傷者及其家屬提供每月一次的康樂活動。這項新服務會在十一月由兩位神學院畢業生

recreational activities for Chinese-speaking SHIP consumers and their families. This new program will start in November with two seminary graduates. We pray for being able to share God's love with this group of families who had gone through trauma in their lives.

Financial Needs

Thanks to God's faithfulness through support from individuals, churches and government contracts, ACCESS survived the worst national financial crisis in decades. As of September 30, 2009, ACCESS anticipates a cash deficit of \$37K for the year 2009. Our God is able and He blesses those who faithfully follow Him.

Please continue to partner with us as God's hands extended to the Boston Chinatown community.

主領。我們祈求有機會與這些經歷過突變的家庭分享上帝的愛。

經費的需要

感謝上帝的信實，透過眾教會及弟兄姊妹的支持及政府的合約，建橋者渡過了美國幾十年來最嚴重的經濟危機。到九月三十日結存為止，我們預計今年會有是三萬七千美元的赤字。我們的上帝是有能的，祂必賜福給跟隨祂的人。

請繼續作我們的福音伙伴，成為上帝向波士頓華埠社區伸出來的。

FINANCIAL REPORT – JANUARY 01 TO DECEMBER 31, 2008

Cliff Chuang

二零零八年財務報告

莊宏毅

The table shown below provides a breakdown of the agency's final 2008 total financial activities. ACCESS ended calendar year 2008 with a \$10,649 cash deficit. Current projections for 2009 based on year-to-date financial activities (not shown below) indicate that ACCESS needs to raise approximately an additional \$37,000 in order to end 2009 without a cash deficit. This deficit can be attributed, in part, to the board's decision to invest in re-development of the adult ESOL program during Spring 2009. The board and staff continue to work very hard to streamline operations where possible, strategically solicit grant support, and raise organizational and individual donations to support our ministry.

| 2008 Revenue Sources 2008 年收入 | Amount | % of Total |
|---------------------------------------|------------------|-------------|
| Tuition and Fees 學費 | \$88,867 | 23% |
| Government Funding 政府撥款 | \$87,546 | 22% |
| Grants 基金撥款 | \$18,750 | 5% |
| Donations - Individual 個人奉獻 | \$107,589 | 27% |
| Donations – Organizational 團體奉獻 | \$37,035 | 9% |
| Donations - Space/Services 場地/服務捐獻 | \$49,561 | 13% |
| Other 其他 | \$2,696 | 1% |
| Total Revenues 全部收入 | \$392,043 | 100% |

以下的圖表是 2008 年終的財政狀況分析，赤字達 10,649 元。根據 2009 年到目前為止的收支狀況，我們預計需要多籌 37,000 元才能免去今年的。經費不敷其中部分的原因是董事會今年春季作出決定，多投資去重組成人英文班。董事會和同工們都十分努力，一方面簡化工作程序，以提高效率，另一方面積極地申請基金撥款，並向個人和團體募捐，以支持各項事工。

| 2008 Program Expenditures 2008 年支出 | Amount | % of Total |
|--|------------------|-------------|
| English for Speakers of Other Languages 成人英文班 | \$121,512 | 29% |
| After School Enrichment Program 課餘活動班 | \$170,238 | 40% |
| Summer Enrichment Program 暑期活動班 | \$65,527 | 16% |
| Community Education / Mother's Group 社區教育/媽媽組 | \$22,946 | 5% |
| Administration / Fundraising 行政/籌款 | \$22,467 | 5% |
| Depreciation 折舊 | \$18,654 | 4% |
| Total Expenditures 全部支出 | \$421,346 | 100% |

| | |
|--|------------------|
| 2008 Net Loss 淨虧 | -\$29,303 |
| 2008 Cash Loss (excluding Depreciation) 現金不敷 (折舊不計在內) | -\$10,649 |

ACCESS PERSONNEL

建橋者負責人名單

Please pray for the following ACCESS Main Personnel

請在禱告中記念建橋者的主要負責人

2009 Board of Directors 2009 年董事會

| | | |
|--------------------------|----|-------------|
| Cliff Chuang, President | 主席 | 莊宏毅 |
| Kin Chung Lam, Treasurer | 財政 | 林建中 |
| Diane Blake, Clerk | 文書 | Diane Blake |
| Joseph Cheung | | 張培智 |
| Anita Chow | | 周廖令嫻 |
| Jamson Lam | | 林庭光 |
| Mei Kee Wong | | 黃廖美琪 |

2009 Committees 2009 年支持小組

| | | |
|---|--------------|--|
| Finance Committee | 財政組 | |
| Betty Ho, Loh-Sze Leung, Cliff Chuang, Kin Chung Lam, Mei Kee Wong | | |
| Networking Committee | 聯絡組 | |
| Diane Blake, Connie Cheng, Lucinda Zehr White, Mei Kee Wong | | |
| Program Development Committee | 課程發展組 | |
| Joseph Cheung, Becky Bailey, Anna Fan, Erin Shyamji, Denise Han, Susana Lee, Mei Kee Wong | | |

9/08-8/09 Staff and Volunteer Coordinators 9/08-8/09 同工及義工

| | | |
|---------------------------------|-------------|--|
| Executive Director | 執行主任 | |
| Mei Kee Wong | 黃廖美琪 | |
| Administrative Assistant | 行政助理 | |
| Sue Cheung | 張鄭素影 | |
| Volunteer Receptionist | 接待義工 | |
| Allen So | 蘇國偉 | |

Adult ESOL 成人英文班

| | | |
|--|---------------|--|
| Coordinators | 主任 | |
| Anne Chen | 楊陳怡安 | |
| Susanna Zweig | Susanna Zweig | |
| Teachers | 教師 | |
| William Davidson, Jolie Griffin, Melissa Lo, Osei May, Keith Nelson, Chia-Shin Cindy Shih, Paul Sidmore, Ahyoung Yoo | | |
| Volunteer Testers | 入學試義工 | |
| Angela Yuen | 阮方景雲 | |
| Bet Har Chan | 陳黃碧霞 | |
| Lilian Li | 黎麗 | |

Enrichment Program 兒童活動班

| | | |
|--|----------------|--|
| Coordinator | 主任 | |
| Becky Bailey | 貝麗 | |
| Teachers | 教師 | |
| Kristen Chan, Meagan Chan, Sandra Chan, Angela Cheng, Christina Cheung, Hayeon Cho, Jolie Griffin, Joy Indrelie, Greg Lau, Joanna Muehleisen, Cheryl Powell, Anna Scott, Freddy Wong, Joanne Wu, Ahyoung Yoo | | |
| EEC Coordinator | 兒童部聯絡助理 | |
| Jenny Lam | 林張佳沂 | |

Administrator **行政助理**

Christina Cheung 張巧欣

Parent Liaison **家長聯絡人**

Mei Yin Lo 梁羅美賢

Volunteer Assistants **義務教師助理**

Kristen Chan, Meagan Chan, Jessica Tsai Cheung, Dominic and Kathleen DiBattista, Gary Look, Ryan So, Kelvin Tan

Summerbridge **夏日營義務主任**

Volunteer Coordinators

Jessica Tsai, Joe Cheung, Gary Look, Eric Mui

Family Life Education **家庭生活**

Volunteers **義工**

Denise Han, Sau-Fong Siu 韓黃鳳君, 蕭黃秀芳

Information, Referral and **資料轉介口譯服務**

Interpreting Services

Worker **同工**

Sue Cheung 張鄭素影

Volunteer Worker **義工**

Mina Paladino 夏月

IRS Volunteer Income Tax Assistance **免費報稅服務**

Volunteer Coordinator **義務主任**

Chik Ching Law 羅植貞

Adult Computer Literacy Program **成人電腦基礎班**

Volunteer Coordinator **義務主任**

Jamson Lam 林庭光

Accounting and Bookkeeping **會計及簿記**

Volunteer Accountant **義務會計**

Dorcas Sung 宋翁愛華

Volunteer Assistant Accountant **義務助理會計**

Floris Luk 陸劉慧詩

Volunteer Bookkeeper **義務簿記**

Sylvia Leung 梁趙美嫦

Volunteer Assistant **義務助理**

Anita Chow 周廖令嫻

Technology Support **科技支持**

Volunteer Interim Coordinator **義務主任**

Connie Cheng 葉鄭文嫻

CBCGB Team Coordinator **聖經教會支持組組長**

Eric Mui 梅宇明

Volunteer Webmaster **義務網頁設計**

Alan Siu 蕭宇浩

Annual Report **年報**

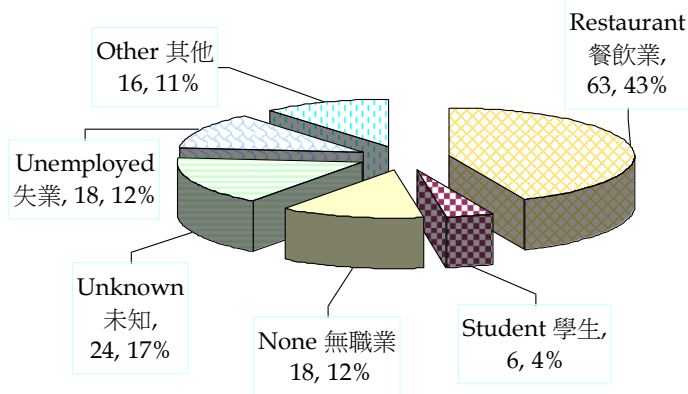
Chinese Editor **中文主編**

Sau-Fong Siu 蕭黃秀芳

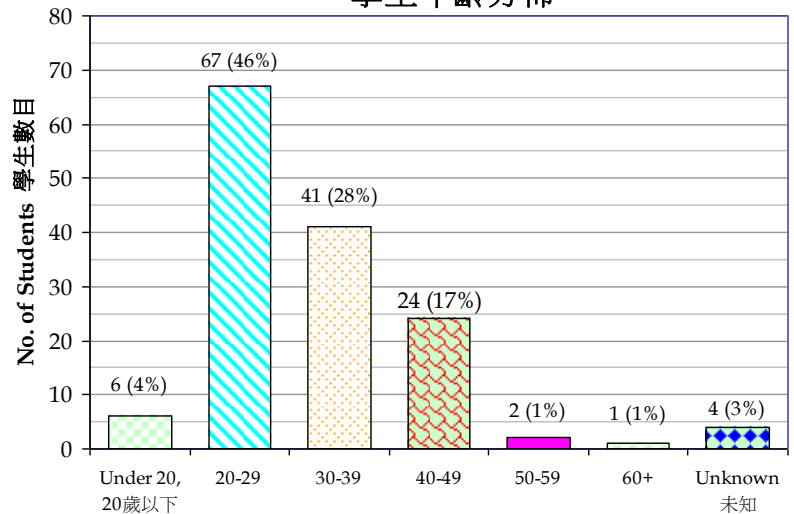
English Editor **英文主編**

Cliff Chuang 莊宏毅

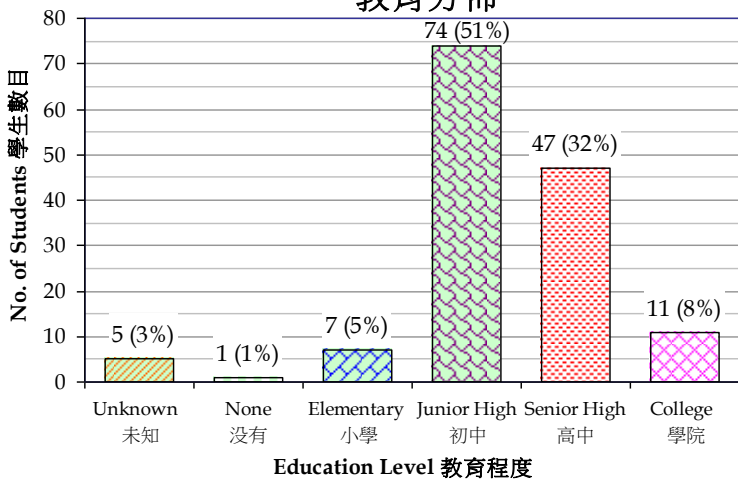
Occupation Distribution
職業分佈



Age Distribution
學生年齡分佈

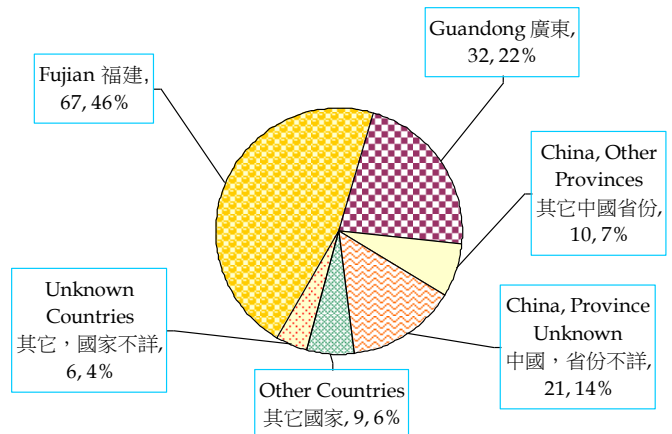


Education Distribution
教育分佈

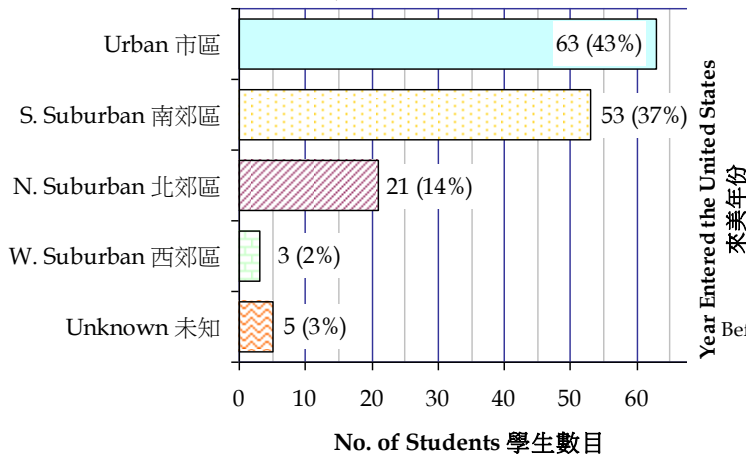


Age Range 年齡範圍

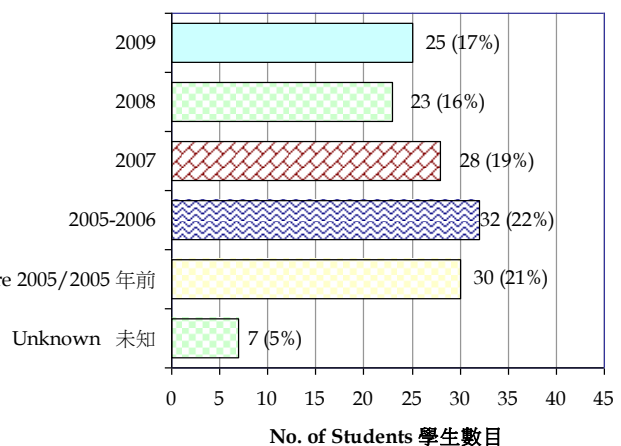
Birth Place Distribution
出生地方分佈

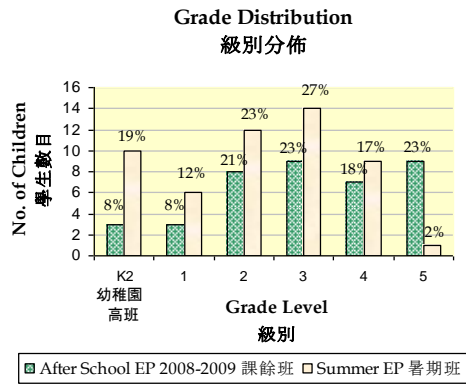
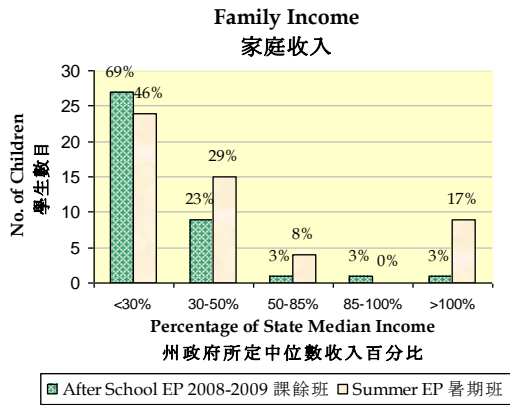


Geographical Distribution
居住地方分佈



Year Entered U.S. Distribution
來美年份分佈





Response Form 回應表

Name 姓名: _____ Phone 電話: _____

Address 地址: _____ Email 電郵: _____

Church Affiliation 所屬教會: _____

Because ACCESS is committed to ensuring that its high-quality programs are available to as many families as possible, most of whom are recent, low-income immigrants, we rely on donations from individuals and organizations to support more than 33% of our budget. Thank you for investing in God's work in and around Boston's Chinatown. Your donation amounts support the following services:

建橋者希望為低收入的新移民提供優質的服務。每年支出的三分之一是有賴於個人及團體的支持。謝謝你願意投資在波士頓華埠及上帝的事工。你的捐獻可以支持下列的事工：

| | |
|------------------------|--|
| 1 位成人英文班學生的獎學金 | Scholarship for Adult English Speakers of Other Languages (ESOL) student: |
| 一年 For a year | \$1,500 |
| 一個學期 For a semester | \$475 |
| 一個月 For a month | \$150 |
| 1 位課餘活動班學生的補助 | Subsidy for After School Enrichment Program (ASEP) for K-5th graders on sliding fees: |
| 一個學年 For a school year | \$4,800 |
| 一個月 For a month | \$480 |
| 一個星期 For a week | \$110 |
| 1 位暑期活動班學生的補助 | Subsidy for Summer Enrichment Program (SEP) student on sliding fees: |
| 整個暑期 For the summer | \$1,000 |
| 一個月 For a month | \$640 |
| 一個星期 For a week | \$150 |

Please check ALL the items that you are interested in 請在所有有關項目劃上✓

- Please send me future ACCESS prayer newsletters and reports
請寄給我建橋者的禱告事項通訊和報告 In English 中文
- I will become a prayer partner and commit to praying for the ministry of ACCESS
我願意成為禱告夥伴, 定期為建橋者的事工祈禱
- I will pledge monthly financial support of 我願意每月認獻
 \$200 \$100 \$50 \$25 Other 其他金額: \$ _____
- Enclosed please find a one-time donation of \$ _____ for
茲附上一次奉獻 _____ 元
 General fund 經常費 Restricted (please specify) 指定事工(請註明): _____
- I am interested in volunteering /working at ACCESS. Please specify program(s): _____
我有興趣在建橋者作義工/同工。請註明事工: _____

Kindly return this form to the address below. Please make checks payable to "ACCESS." Thank you for your support.
請將填妥的回應表寄回下列建橋者地址。支票抬頭請寫「ACCESS」。謝謝您的支持。

ACCESS, 244 Harrison Avenue, Boston, MA 02111